



Transition to High School

Version 1, 2021



Contents

Introduction	3
The importance of transition	3
Planning for success	3
Leadership is essential	3
Local High Schools	4
Government High Schools (Public)	4
Non-government High Schools (Catholic and Independent)	4
Application Timeline	5
How we aid the process	5
List of Local Schools	6
Fremantle Christian College (I)	6
Fremantle College (P)	7
John Curtin College of the Arts (P)	8
Kennedy Baptist College (I)	9
Melville Senior Highschool (P)	10
Perth Waldorf School (I)	11
Port School (I)	12
Rockingham Montessori (I)	13
Seton Catholic College (C)	14
Final Considerations	15
References	15

*Public (P), Independent (I) and Catholic (C) schools have been identified within this list.

Revision History

Date	Revision	Detail
27/10/2020	V1 DRAFT	First developed
08/06/2021	V1	Additional schools added, content edited

Introduction

Moving from primary school to secondary school is a significant event in every child's educational journey. It is a time of adjustment to a new school; from being one of the youngest, rather than the oldest, with new peers, teachers and routines. How well children navigate the transition to secondary school has important implications for their ongoing psychosocial, emotional and academic development. This document provides information regarding Kerry Street Community School's procedures of transition. It also includes an overview of some local high schools.

We, at Kerry Street, recommend that you begin your transition to high school process when your child is in Year 4. Some schools require enrolment by the end of Year 4.

The importance of transition

Supporting students to transition involves more than timing and the physical transfer from one educational setting to another; the endeavour is best described as building a robust and well-engineered bridge that students can cross.

When students change between schools, they must adjust to new surroundings, become familiar with new teachers and peers, learn new ways of working and make sense of the rules and routines that operate in their classes (Sanders et al., 2005). While students are navigating the formal school environment, they are also adjusting to the social changes that happen when changing schools.

Planning for success

At Kerry Street Community School, we begin preparing our students for the transition to high school when students are in upper primary classes. We provide both, in school programming and preparation and external experiences.

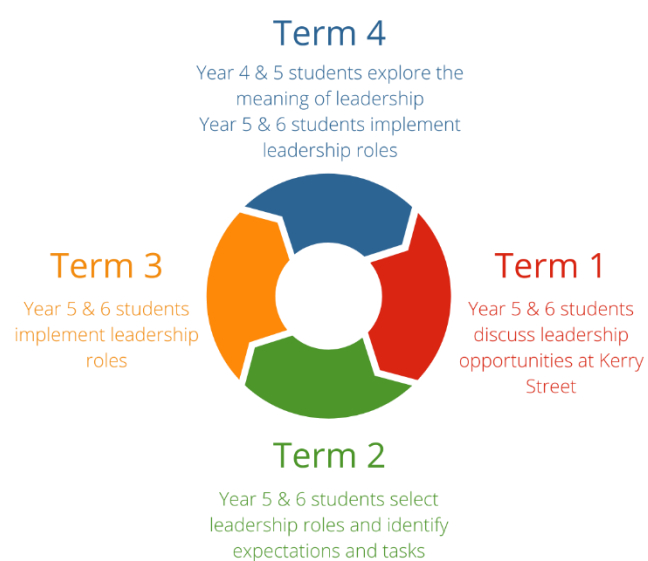
Our school fosters a hands-on approach to education, favouring exploration, interaction

and projects that are relevant to real life, which is an approach that aims to keep students engaged and passionate throughout their learning journeys. Through this approach, students experience a range of teaching and learning styles, including explicit teaching, problem-solving, digital technology integration, hands-on inquiry and self-led projects.

From Year 5, students begin using Student Diaries to take responsibility for their learning. An emphasis is on journaling and note-taking, rather than scheduling and homework.

Leadership is essential

As students' progress into the upper primary years, there is a responsibility to lead the school both actively and passively. In 2020, we established a leadership program that aligned with our school values.



The diagram above references the cyclical process of the leadership program.

Leadership roles are selected based on student interest and areas of expertise. E.g., Sports Leader, Maths Leader, Environmental Leader, Art Assistant.

Throughout the year, students will engage in various conversations, workshops and learning around leadership, and be provided opportunities to lead students and support staff.

Local High Schools

When choosing a high school for your child, there are several things to take into consideration. A safe and happy learning environment that encourages both emotional and intellectual growth is a priority. It is also essential to meet any special needs or interests your child may have – be they academic, sporting or otherwise.

Government High Schools (Public)

Public/Government schools are state funded and provide free education to residents of Australia. Although free, schools will request a voluntary annual contribution from parents. This payment isn't compulsory, but it greatly assists the school with its resources. In addition, parents are usually required to pay for textbooks, uniforms, excursions, meals and other extra-curricular activities.

Public schools have two types of enrolments, local enrolment and out-of-area enrolment. Students living within a public schools catchment area will be automatically accepted. Some schools are strictly zoned and require families to produce proof that they live in the local area. A parent can request an out-of-area enrolment. They will need to give reasons for their preference and may be granted a vacancy at the School's discretion.

Public schools receive a higher rate of funding for students with additional needs. The government provides extra funding to the school for aides and extra resources if certain criteria is met. A public school is more likely to have a dedicated class, and specific programs for students who require additional support e.g., Autism Programs, Hydrotherapy Classes, Multi-Sensory Rooms.

Non-government schools (Catholic and Independent)

Catholic and Independent Schools are private institutions that request payment of fees for attendance. In addition to the tuition costs of each family, the Commonwealth Government also provides a portion of funding. Each school sets its own fees and these can vary quite dramatically depending on the school. Additional costs may include uniforms, levies, excursions, extra-curricular activities, subject extras, and textbooks.

Private schools vary greatly from school to school, each school offering different values, philosophy, and pedagogy. Private schools may also offer a wider variety of excursions, sports, extra-curricular activities, events and educational opportunities.

Catholic schools offer education for students of the Catholic faith. Each school accepts a certain percentage of non-Catholic students. Some other church-affiliated schools accept students from any religious or secular background.

Non-affiliated, independent schools usually accept applications for enrolment at least 18 months before the proposed start date. It is recommended that you contact your preferred school for further information as early as possible. Parents may be required to pay application or enrolment fees, and sometimes both. Zoning restrictions do not apply in the independent sector.

Application Timeline

Below is a generic High School application process timeline. Please note: some schools may require additional notice of enrolment, and specialist application will have specific due dates. Please contact the school or visit their website to find specific information about their enrolment process.

Year 4 Semester 1	<p>Begin investigating local high schools:</p> <ul style="list-style-type: none"> - Independent High Schools: https://www.ais.wa.edu.au/search-for-a-school - Public High Schools: https://www.det.wa.edu.au/schoolsonline/home.do - Catholic High Schools: https://www.cewa.edu.au/our-schools/find-a-school/
Year 4 Semester 2	<p>Independent and Catholic schools:</p> <ul style="list-style-type: none"> - Tours of schools - Submit expressions of interest or enrolment applications.
Year 5	<p>Public schools:</p> <ul style="list-style-type: none"> - Tour schools and submit enrolment applications (it is recommended to complete enrolment applications before the end of Term 2) - Applications for GATE program open https://www.education.wa.edu.au/gifted-and-talented <p>Independent and Catholic schools:</p> <ul style="list-style-type: none"> - Interviews conducted throughout the year - Acceptance of enrolment offers and signing of enrolment contracts - Scholarships advertised for following year
Year 6 Term 1	Scholarships, Gifted and Talented, Academy and Specialist Program applications due (check school information for more details)
Year 6 Semester 2	<ul style="list-style-type: none"> - Parent Information Evenings - Welcome Day - Uniform fittings

How we aid the process

At Kerry Street Community School, we assist with this process by visiting a number of local high schools in order for students to explore high school grounds with the comfort of their peers and compare various high schools. This process commences with Year 4 and 5 students, the purpose being to experience a wide range of options. For our Year 6 students, the purpose of their visit is to familiarise themselves with high school learning environments and provide the opportunity to ask any questions of current staff and students.

We have been in contact with various high schools, Independent, Catholic and Public, who have generously agreed to support this process by inviting us to their schools annually. Over the next few pages, we have collated some information regarding these schools to provide an overview in alphabetical order. For further information, please contact the schools directly.



Fremantle Christian College is a coeducational independent secondary school, serving years 7 – 12 students located in Fremantle, WA.

Uniform: Compulsory summer and winter uniform.

Technology: Computer laboratory and access to class iPads. Year 11 and 12 students have personal devices assigned to them.

Student Wellbeing: Two chaplains, school psychologist, strong teacher community and a parent representative team

Behaviour Guidance: There is a clear behaviour guidance policy within the school that can be sighted at <http://www.fremantlecc.wa.edu.au/about/policies/>

Year 7 Fixed subjects and electives: English, Humanities and Social Sciences, Mathematics, Science, Design and Technologies, ICT and Future Technologies, Creative and Performing Arts, Christian Education, Languages - Mandarin

Extra-curricular activities/After-school programs: a developing sport program, instrumental music tuition, New Life Youth, Leadership, Tutoring

For more information visit: <http://www.fremantlecc.wa.edu.au/>



Fremantle College is a coeducational public secondary school, serving years 7 – 12 students located within the Fremantle catchment area.

Uniform: Summer and winter uniform in teal, grey, white and ocean blue

Technology: BYO Device to school's specifications

Student Wellbeing: Student services team with a focus on promoting a positive environment. Student wellbeing and pastoral care are at the core of student services.

Behaviour Guidance: Fremantle College has a Positive Behaviours Policy 'to ensure that a safe, supportive and caring learning environment is created for all students'.

Year 7 Fixed subjects and electives: English, Mathematics, Science Humanities and Social Sciences. Health and Physical Education, The Arts (including Music, Visual Arts and Media Arts over a two-year period), Digital Technologies, Materials Technology, Food and Textiles Technology, Languages – French is the chosen language.

Specialist Programs: Gifted & Talented Secondary Selective Entrance Program, Specialist Marine Studies, Specialist Contemporary Music, Specialist ICT, AFL Academy, Specialist Learning Program for Students with Autism Spectrum Disorder programs

Application Cut Off Date: First Friday of Term 3

For more information visit: <https://fremantlecollege.wa.edu.au/>



John Curtin College of the Arts is a coeducational public secondary school, serving years 7 – 12 students located within their catchment area.

Uniform: Compulsory summer and winter

Technology: BYOD Apple iPads for Year 7 students

Student Wellbeing: Chaplain, College Nurse, Psychologist, Careers Coordinator, Events Coordinator

Behaviour Guidance: A Good Standing program designed to promote positive behaviour

Year 7 Fixed subjects and electives: English, Mathematics, Science, Humanities and Social Sciences, Health and Physical Education, Music, The Arts, Technologies and Languages – Italian. The website has a Junior School booklet to explain all the subjects and electives.

Specialist Programs: Football, Academic Excellence, Music Enrichment (Class Music), Gifted and Talented Programs including Ballet, Contemporary Dance, Drama, Media Arts, Music, Music Theatre and Visual Arts,

Extra-curricular activities/After-school programs: A range of clubs including: astronomy, chess, coding, robotics and roots and shoots

For more information visit: <https://www.jc.wa.edu.au/>



Kennedy Baptist College is a coeducational independent secondary school, serving years 7 – 12 students located in Murdoch, WA.

Uniform: Compulsory summer and winter uniform

Technology: BYO Device to school's specifications

Classes: Maximum of 32 students per class, students streamed into Extension, General and Foundation classes

Student Wellbeing: Student health centre with nurse, chaplain, counsellors, psychologists and 'beach' for regulation.

Behaviour Guidance: Positive Behaviour is recognised through extrinsic reward e.g. prizes and House Points. Disruptive behaviours is dealt with using 'The Canter Assertive Discipline System' inside classroom, a demerit point system is used for outside of the classroom.

Year 7 Fixed subjects and electives: English, Mathematics, Humanities, Science, Christian Education, Physical Education, Health Education, Computing, Language (French or Chinese). Two elective subjects are completed each term. Drama, Dance, Media Arts, Music, Visual Arts, Design, Food, and Metal and Wood Work

Specialist Sports: Cricket and Basketball

Extra-curricular activities/After-school programs: Interschool sport, Dance, Drama, Mock Trial Competition, Acrogym, Music Book Club, Art Club, Running Club, Photography Club, Study Skills/Tutoring, Junior Interschool Sport, Science Club, Board Game Plus, Maker Space (Craft), Community Service Project, and Biology Club.

Our students say: "Kennedy has a lot of new buildings, and an awesome media area!" (Year 6 Student 2020)

"The school seems very formal, and strict, especially with the uniform" (Year 5 Student 2020)

For more information visit: <https://www.kennedy.wa.edu.au> or download the handbook <https://www.kennedy.wa.edu.au/about/policies/>



Melville Senior High School is a coeducational public secondary school, serving Years 7 – 12 students located in Melville catchment area.

Uniform: Compulsory summer and winter.

Technology: BYO Device iPads or MacBooks recommended.

Student Wellbeing: School Psychologists, Health Centre.

Year 7 Fixed subjects and electives: English, Maths, Science and HASS, Physical Education, LOTE (Chinese or Italian) and Health.

Specialist Programs: Aviation Studies, Music in Focus, Graphic Design Media and Netball as well as a Gifted and Talented Academic Selection Program in the Humanities and Social Sciences, English, Mathematics and Sciences.

Recommended Enrolment Timeframe: Enrolment information is distributed to intake schools in Term 1 of each year.

Application Cut Off Date: Last day of Term 2 of Year 6.

For more information visit: <https://www.melville.wa.edu.au/>



Perth Waldorf School

PROVIDING STEINER EDUCATION

Perth Waldorf School is a coeducational independent school serving Kindergarten to Year 12 students located in Bibra Lake, WA.

Uniform: Neat, natural fibre clothing suitable for the season. Certain items of clothing are not permitted.

Technology: Technology is limited.

“Students are not allowed to bring personal laptops or electronic media devices to school for entertainment or other purposes. In cases where a student’s learning would be significantly improved with the support of technology, a meeting should be organised with the Learning Support Coordinator to discuss what options may be available” (High School Parent Handbook)

Classes: Small class sizes.

Student Wellbeing: School counsellor and Wellbeing Coordinator available. Class guardians are responsible for students’ progress and attendance. Each year group has regular sessions with Class Guardians with a focus on pastoral care.

Behaviour Guidance: Class Teachers keep their own behaviour plan, positive reinforcement is used.

Year 7 Fixed subjects and electives: Language/Arts, Mathematics, Science, LOTE (German or Japanese), Practical Arts, Physical Education, Sculpture, Craft, Woodwork, Life skills, Drama, Ecology, Eurythmy. Note, Year 7 is located on a separate campus to facilitate the transition to high school.

For more information visit: <https://pws.wa.edu.au/our-school/high-school/>



School is a coeducational independent re-engagement and care secondary school, serving years 7 – 12 students who are socially disadvantaged or at risk located in Wheeler Road, Hamilton Hill, WA

Uniform: No uniform, but there is a dress code that must be followed. https://www.portschool.wa.edu.au/wp-content/uploads/2020/06/Student-Dress-Code_v1.0.pdf

Student Wellbeing: A focussed Counselling and Student Services group.

Behaviour Guidance: Port School ensures expectations, responsibilities and consequences of behaviour are clear to students, parents and staff. Positive behaviour is recognised and a flow chart is used for managing behaviour.

Year 7 Fixed subjects and electives: Maths, English, Health, Visual Arts, Workshop, Cooking and Physical Education. Port School also offers vocational education and training courses.

Recommended Enrolment Timeframe: End of Term 3 – Year 6.

For more information visit: <https://www.portschool.wa.edu.au/>



Rockingham Montessori School's Adolescent Program is a coeducational program for students aged 12 to 18 years located in Rockingham, WA.

Uniform: No uniform

Technology: Can BYO device, however, devices are available to use

Classes: Small class sizes where teacher moves to students. Students are also offered flexibility and independence through working in the local public library next to the school.

Student Wellbeing: Home group teachers with small class sizes, school psych services and admin assistance.

Behaviour Guidance: Expectations are set and limits held with natural consequences sought if required. Students are given responsibilities and independence however this becomes restricted if breaches to agreements are made (e.g. Student can work in the library – if work is not completed, they will be required to work in classroom).

Year 7 Fixed subjects and electives: Creative Arts & Music, Language, Health and Physical Education, Mathematics with Geometry, English, Science with Biology, History & Geography, Technology and Enterprise. Internships and University Pathways are also available.

Extra-curricular activities/After-school programs:

Our students say: "This school reminds me of Kerry Street! I love how much flexibility and independence there is!" (Year 6 student 2020)

For more information visit: <https://www.rms.wa.edu.au>



Seton Catholic College is a coeducational secondary school, serving years 7 – 12 students located in Samson, WA.

Uniform: Compulsory summer and winter uniform

Technology: BYO Device to schools specifications

Classes: Maximum of 32 students per class. Foundation classes for students with Learning Difficulties equip with 2 teachers in each class. Education Support Unit on site with complete integration of students with Special Needs into all classes.

Student Wellbeing: School nurse, chaplain, counsellors, psychologist, well-being program 2 hours per week, life balance program one hour per week.

Behaviour Guidance: Purposeful values, using restorative practices. Heads of learning areas and pastoral care teachers guide and support behaviour rather than punish. Behavioural issues are dealt with in accordance to the rules of procedural fairness.

Year 7 Fixed subjects and electives: English, Mathematics, Humanities, Science, Relation and Life, Physical Education, Health Education, Computing, Language (Italian). Two elective subjects are completed each term. Drama, Dance, Media Arts, Music, Visual Arts, Design, Consumer Science, Food, and Metal and Wood Work

Extra-curricular activities/After-school programs: Various Sport Clubs, Dance, Music and Art.

Our students say: "I was so comfortable walking around Seton, everyone was so welcoming and willing to share with us. It felt like a community" (Year 6 Student 2020)

For more information visit: <http://www.seton.wa.edu.au>

Final Considerations

Choosing a high school is a big decision for all involved. We hope that this document and accompanying leadership and school visit procedures support the transition.

Here are some final considerations that may support the decision making process:

1. Start considering schools early;
2. Seek feedback from all involved, especially your child;
3. Discuss what you are looking for in a high school to help develop a clear picture of what you want;
4. Take your time to investigate high school options: attend school tours; ask questions; and take the time to research;
5. Talk to Kerry Street Community School Staff, we are always willing to answer any questions you may have and aim to help make the transition as smooth as possible.

We will be updating this document regularly, please pass on any feedback, particularly if there is more information that could support this process. We wish you all the best on your journey onto high school!

References

- At School and Beyond. (2021). Retrieved 14 June 2021, from <https://www.goodschools.com.au/start-here/at-school-and-beyond>
- Catholic Schools. (2021). Retrieved 14 June 2021, from <https://www.cewa.edu.au/our-schools/>
- Choosing a Public School. (2021). Retrieved 14 June 2021, from <https://www.education.wa.edu.au/choosing-a-public-school>
- Independent Schools. (2021). Retrieved 14 June 2021, from <https://www.ais.wa.edu.au/independent-schools>
- Sanders, D., White, G., Burge, B., Sharp, C., Eames, A., McEune, R., & Greyson, H. (2005). *A Study of the Transition from the Foundation Stage to Key Stage 1*. (p. 9). United Kingdom: National Foundation for Educational Research.